

Working in Coober Pedy

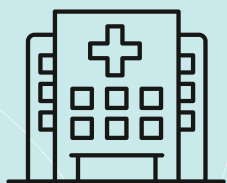


Join us in providing exceptional ambulance services in Coober Pedy - Antikirinya Matu - Yankunytjatara Country. Known as the Opal capital of the world, Coober Pedy is located in South Australia's Far North, 850km from Adelaide. The town boasts a sun-baked lunar landscape, fascinating history and a unique way of life. In one of the world's iconic wonders, residents and visitors descend beneath the ground to the labyrinth of underground houses, hotels and even shops or simply watch the iconic outback town change colour with its famous Outback sunsets. It's breathtaking!

Benefits

- A career in Coober Pedy is more than just a job – make a real difference in a local community
- Continuous learning and development opportunities working in a remote setting
- Access the stunning landscape and live in one of the most unique towns in the world
- Explore the outback, such as Breakaways, William Creek, Kati Thanda – Lake Eyre

Health services



Coober Pedy Hospital is a Multi-Purpose Service-funded facility with 15 acute, 1 palliative care and 4 high level aged care beds. There is a busy Accident and Emergency and Outpatient department and a variety of services including x-ray, pathology, plastering and minor procedures can be undertaken. Community Health also provides outreach services to the local community, caring for consumers at home.

Population 1,566 ^{*2}



- 60% of European heritage, having migrated from southern and eastern Europe after the Second world War.^{*1}
- More than 45 nationalities represented creating a very ethnically diverse community.^{*1}
- 15% declared Indigenous^{*2}

^{*1} Source: District Council Coober Pedy / ^{*2} Australian Bureau of Statistics Census 2021

Housing



Median Rent
is \$150/week

Schooling



Coober Pedy Area School caters for students from Reception to Year 12.
A Pre-School is located on the same site.

